

EMP REF.: 20180017

TECHNICAL APPLICATION

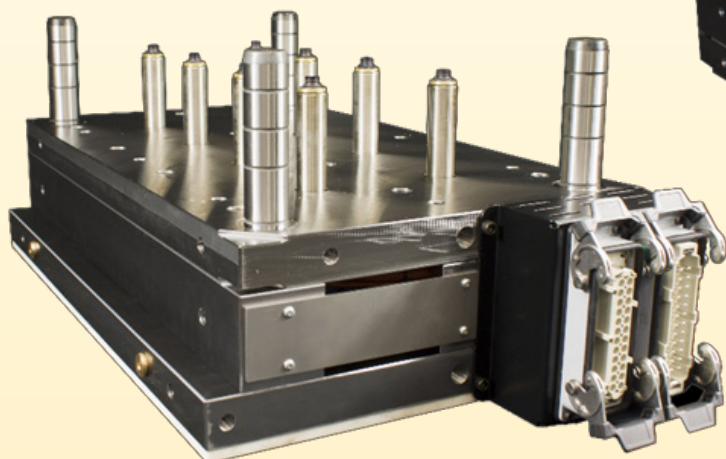
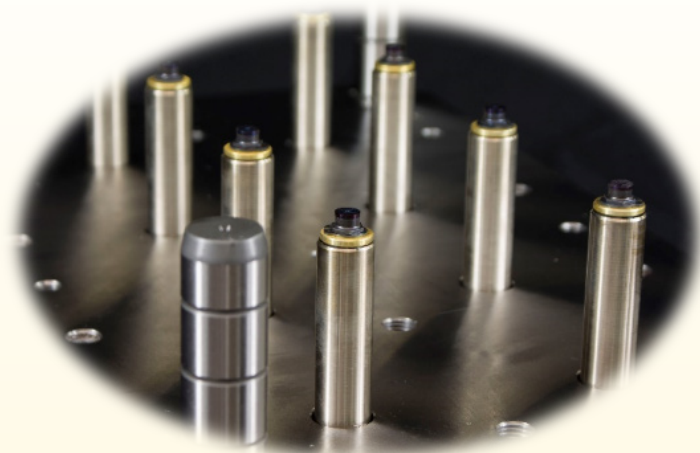
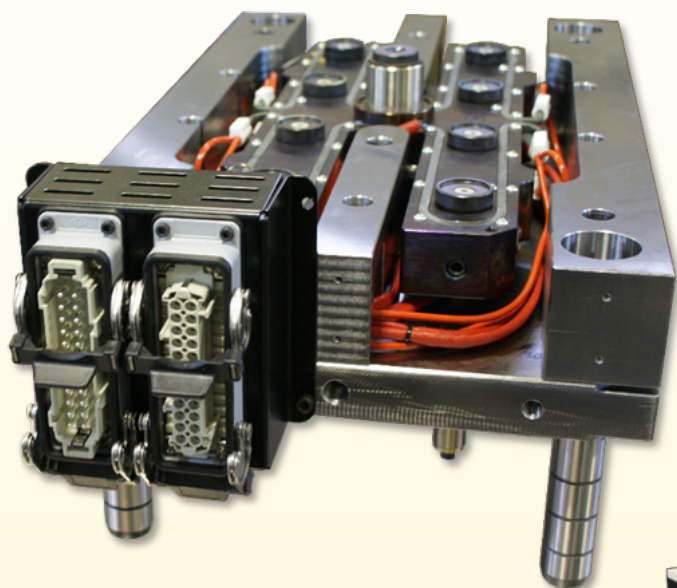
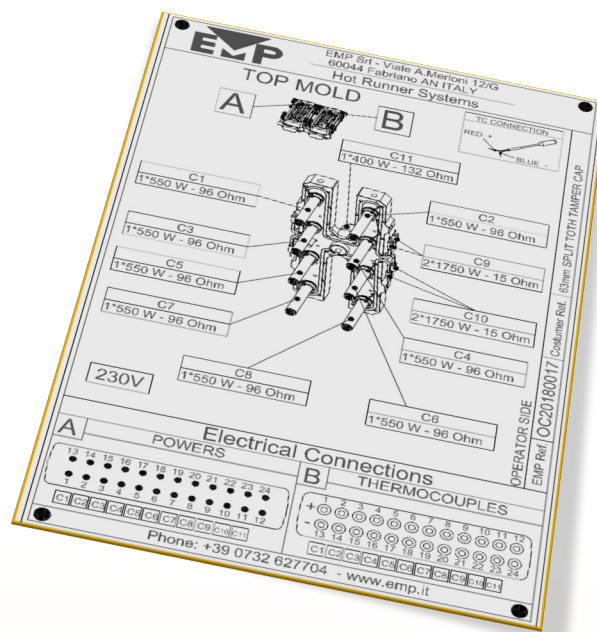
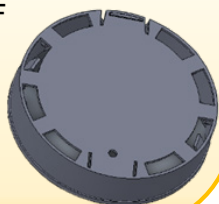
FIELD: Cap & Closures

MOULDED PARTS: 63mm SPLIT TOOTH TAMPER CAP

MOULDING MATERIAL: PP

GATES: 8

OPTIONS: HOT HALF



EMP REF.: 20180017

TECHNICAL APPLICATION

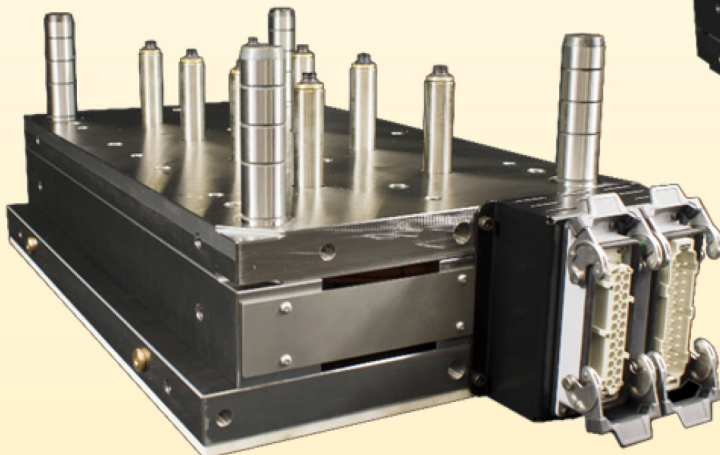
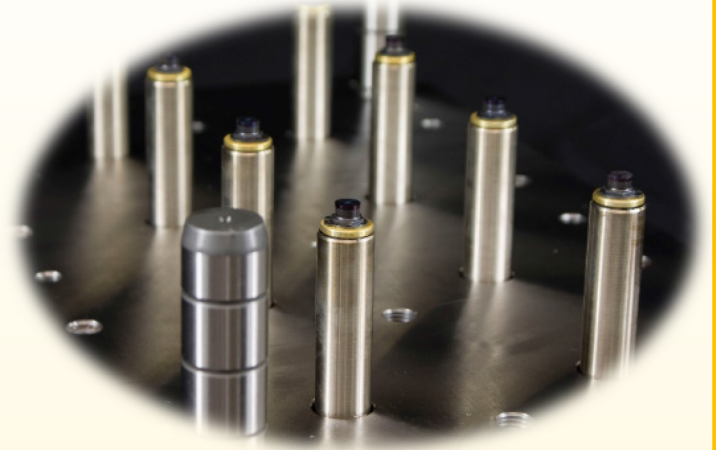
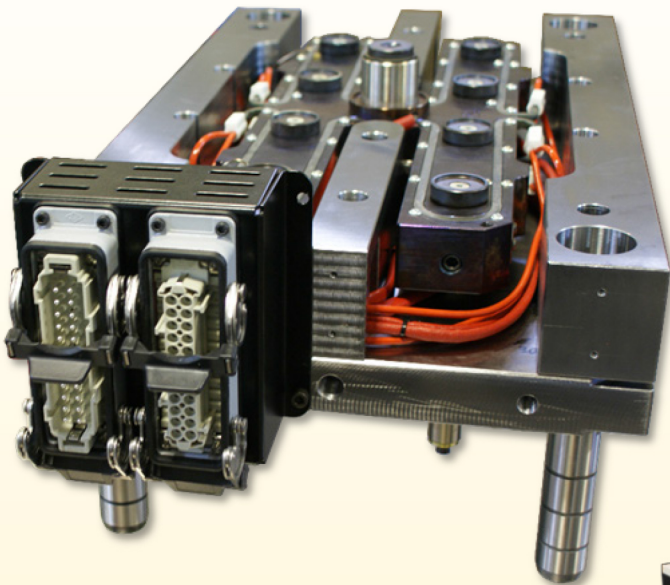
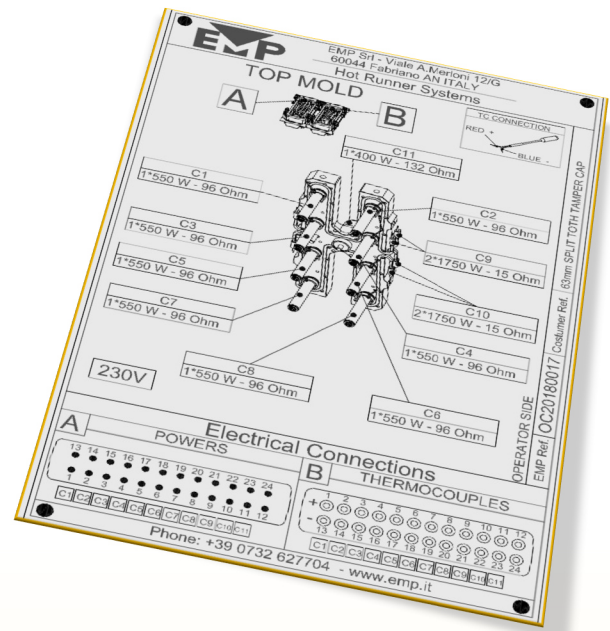
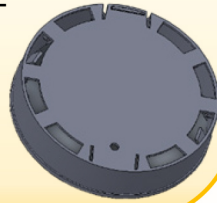
FIELD: Cap & Closures

MOULDED PARTS: 63mm
SPLIT TOOTH TAMPER CAP

MOULDING MATERIAL: PP

GATES: 8

OPTIONS: HOT HALF





www.emp.it

info@emp.it



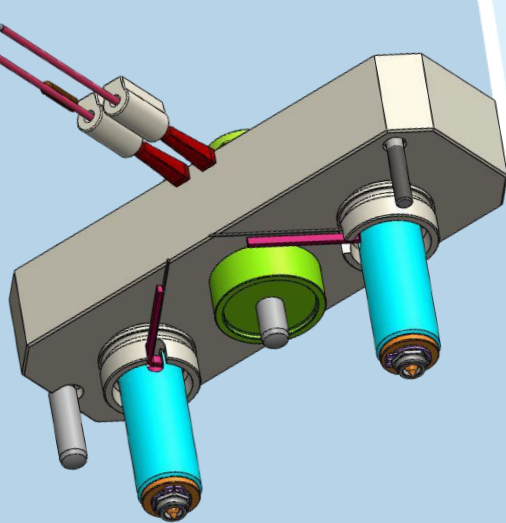
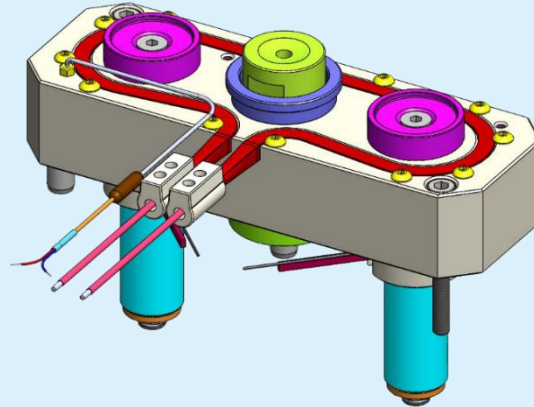
E.M.P. Srl

Viale A.Merloni 12/G - 60044 Fabriano Ancona ITALY
Tel. +39 0732 627704 - Fax +39 0732 627977

Hot Runner Injection Systems



CAPS & CLOSURES



EMP SUCCESS STORY

EMP REF.: 20140856

BUSINESS FIELD: CAPS & CLOSURES

MOULING: TOOTHBRUSH CASE

MOULDING MATERIAL: PP

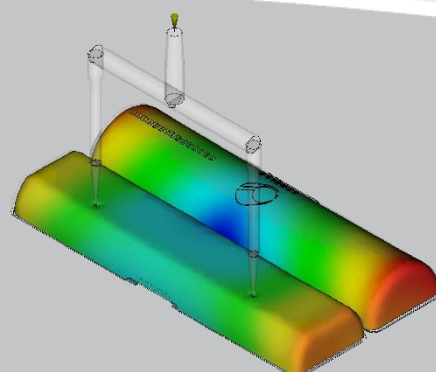
PART WEIGHT: 80 g.

CAVITIES: 1 (2 feeds)

GATE VESTIGE: T2

**FAST
INSTALLATION**

**Customer
FULLY SATISFIED**





www.emp.it

info@emp.it



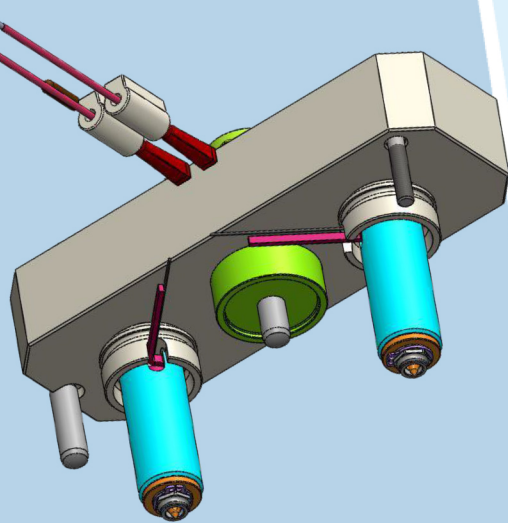
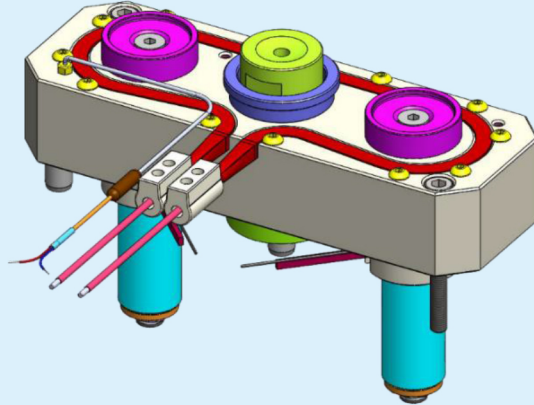
E.M.P. Srl

Viale A.Merloni 12/G - 60044 Fabriano Ancona ITALY
Tel. +39 0732 627704 - Fax +39 0732 627977

Hot Runner Injection Systems



CAPS & CLOSURES



EMP SUCCESS STORY

EMP REF.: 20140856

BUSINESS FIELD: CAPS & CLOSURES

MOULING: TOOTHBRUSH CASE

MOULDING MATERIAL: PP

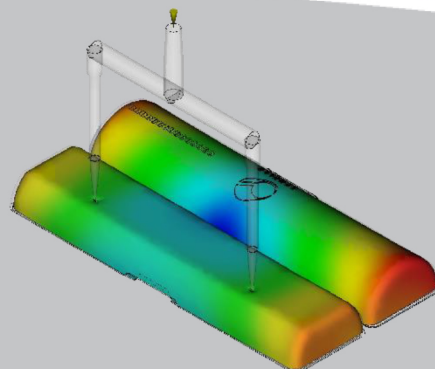
PART WEIGHT: 80 g.

CAVITIES: 1 (2 feeds)

GATE VESTIGE: T2

**FAST
INSTALLATION**

**Customer
FULLY SATISFIED**



Part Name: *Tester Pot Brush Cap*

Description: -



System n°: *OC20130443*

Gate Vestige Type: *T2 Ød=1.0mm*

Manifold Code: *CCLH1AQS04022*

Nozzle Code: *UGEP2004-M-A-1*

Mould Maker: *TREMIC TOOLS Limited*

Moulder: *RPC COnainers MR Limited*

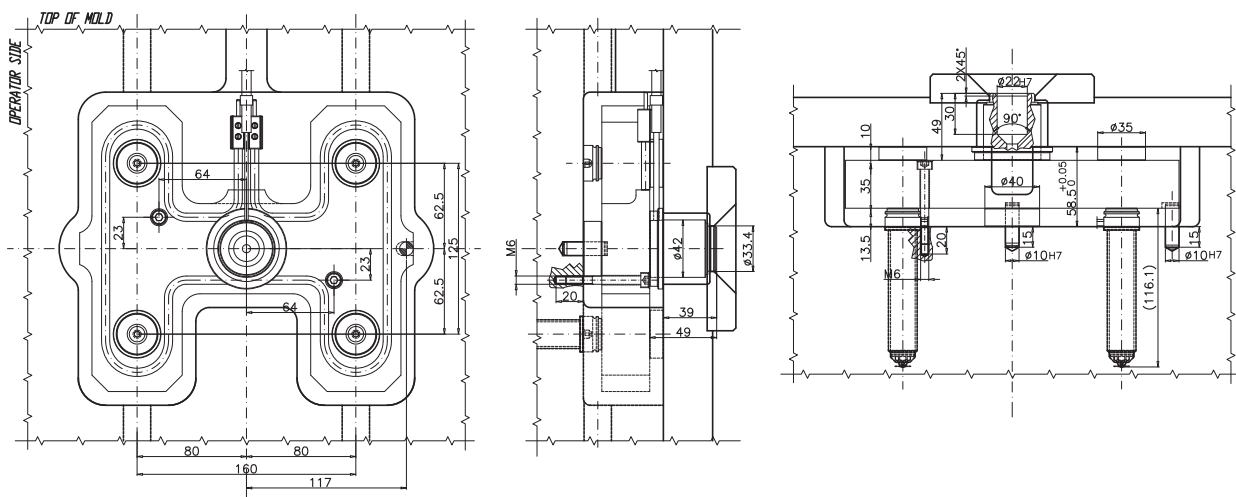
Cavities: *4*

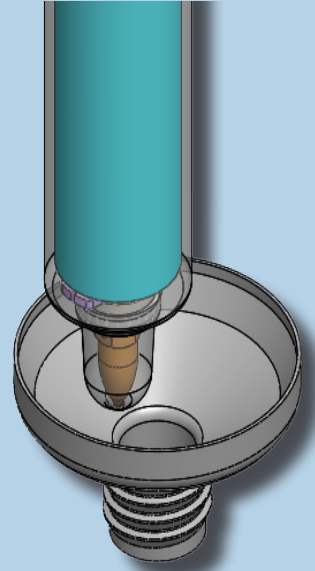
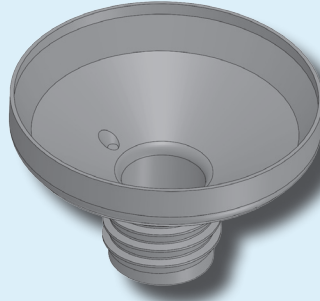
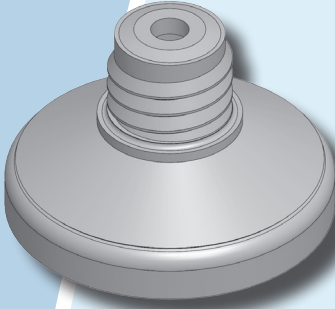
Part Weight: *2g*

Shot Weight: *8 g*

Dimensions: *Look at the Attached Sample*

Material: *PP*





Technical Application:

- **Field:** FOOD INDUSTRY
- **Detail Produced:** TOOTHPASTE CAP
- **Molding Material:** PP
 - **Part Weight:** 4g
 - **Gates:** 24
- **Injection Type:** Direct Gating Nozzles
- **Options:** -

Item No.	Part No.	Description	Qty.
1	CCLP48QT24054	Hot Runner Manifold on Design	1
2	REQ50611001950D15	Armoured Square-Cross Heater 6*6 Sv.1100 W.1950	4
3	UGCCBCCEM3-01	Ceramic Electric Connector M3 Type 01	16
4	MVCA24251000	Electrical Wires L=1000	8
5	REQ50611001950D15	Armoured Square-Cross Heater 6*6 Sv.1100 W.1950	4
6	CCDS550441000	Upper Spacer ØE50 H=10	10
7	UGCCAL1033	Plug Ø10 * 33	2
8	CCDIE540341500	External Central Spacer B=15 ØE=40	1
9	UGCL2000118-M-A-1 [2H=0.30 ØC=4.0]	Nozzle	24
10	SF151551000J	SF J Thermocouple, equipped with fixing device. Wires L=1000	8
11	ISO 4742 - M8 x 70	ISO 4742 - M8 x 70	4
12	CCDS535301000	Upper Spacer ØE35 H=10	2
13	CCDB559421000	Bushing Spacer with Milling	1
14	REPTS01FC-UGTU01FC	Minutubular Coiled Heater + Protection Pipe Sv.600 W.470	1
15	CCBRL33100590R0195	Extended Sprue Bushing Ø33 ØC=10 R=19.5 L=59	1
16	Circlip DIN 471 - 32 x 1.5	Circlip DIN 471 - 32 x 1.5	1
17	UGAS3933	Insulating Titan Ring ØE39 ØI33 H=6	1
18	ISO 7380 M4 x 6	ISO 7380 - M4 x 6	108
19	ISO 10642 - M6 x 12	ISO 10642 - M6 x 12	28
20	CCDSEL25201000	Upper Spacer for Closure Cap ØE25 H=10	16

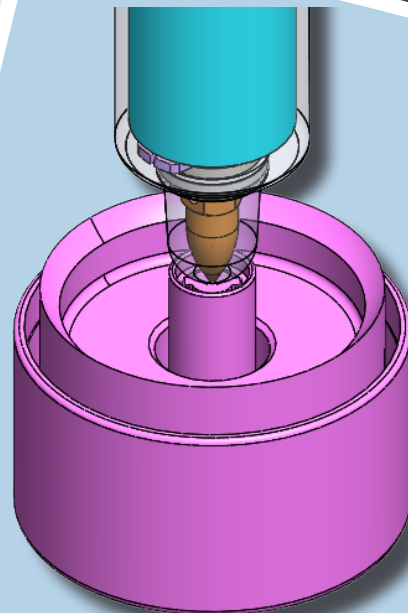
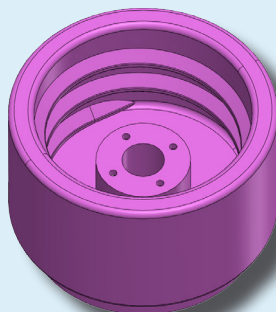
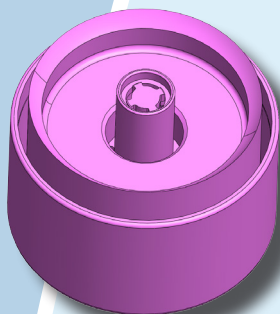
Item No.	Part No.	Description	Qty.
21	UGCCL200-105-M-ØC-04	Special Nozzle Body ØC=4.0	1
22	S101551000J-00	SF J Thermocouples with MgO Insulation	1
23	REPNSF1000-109	Minutubular Coiled Heater + Protection Pipe Sv.500 W.275	1
24	Circlip DIN 471 - 9 x 1	Circlip DIN 471 - 9 x 1	1
25	UGPUCL20A1 - ØI=0.3	Tip	1

COMPONENTS DATASHEET

CUSTOMER:		Material To Be Moulded	PP
Our Ref. PR20120243		Part Weight (g)	3g
Ref. Description OC20120380		Part Volume (cm³)	-
Yours Ref. 0004102477		Colour Change	-
Ref. Description 2012/337		Average Wall Thickness (mm)	-
Items Descriptions \ Notes:		Filler	-

Inspection Temperature		270°	Delivery	20/06/12
SHEET WITHOUT TOLERANCE INDICATION		UNI EN 22768-1		
REV. 2		DATE	14/06/12	Sheets
DRAWN BY		SCALE	1/1	
SIGNED BY		Scale		
Sheet (format)		A4		

File Location: E:\Ordini 3D\ANNO 2010\OC20120380 [Inst.3D]\



Technical Application:

- **Field:** FOOD INDUSTRY
- **Detail Produced:** CAP
- **Molding Material:** PP
- **Part Weight:** 6g
- **Gates:** 4
- **Injection Type:** Direct Gating Nozzles
- **Options:** -

Scale 1:1

Scale 1:2

Item No.	Part No.	Description	Qty.
1	CCBRL33080590R0000	Extended Sprue Bushing Ø33 ØC=08 R=0 L=59	1
2	CCDBS59421000	Bushing Spacer with Milling	1
3	CCDIE540341550	External Central Spacer B=15.5 ØE=40	1
4	CCDSE535301000	Upper Spacer ØE35 H=10	4
5	CCLP1AQ704007	Hot Runner Manifold on Design	1
6	Circlip DIN 471 - 32 x 1.5	Circlip DIN 471 - 32 x 1.5	1
7	ISO 10642 - M6 x 12	ISO 10642 - M6 x 12	4
8	ISO 4762 - M6 x 55	ISO 4762 - M6 x 55	2
9	ISO 7380 M4 x 6	ISO 7380 - M4 x 6	16
10	MVCA24251000	Electrical Wires L=1000	1
11	REPT501FC-UGTU01FC	Minitubular Coiled Heater + Protection Pipe Sv.600 W.470	1
12	REQ50607001200	Armoured Square-Cross Heater 6 * 6 Sv.700 W.1200	1
13	SP151551000J	SF J Thermocouple, equipped with fixing device, Wires L=1000	1
14	UGAS3933	Insulating Titan Ring ØE39 ØI33 H=6	1
15	UGCCAL1034	Plug Ø10 * 34	2
16	UGCCBCCEM3-01	Ceramic Electric Connector M3 Type 01	2
17	UGCL2003M-A1 [ØF=0.40 ØC=4.0]	Nozzle	4

Item No.	Part No.	Description	Qty.
18	Circlip DIN 471 - 9 x 1	Circlip DIN 471 - 9 x 1	1
19	REPNSP1003	Minitubular Coiled Heater + Protection Pipe Sv.350 W.200	1
20	S100851000J-02	SF J Thermocouples with MgO insulation	1
21	UGCCL203-M-ØC=04	Nozzle Body ØC=4.0	1
22	UGPUCL20A1 - ØF=0.4	Tip	1

COMPONENTS DATASHEET

CUSTOMER:		Material To Be Moulded	PP
Our Ref. OC20110837		Part Weight (g)	6g * 4U
Yours Ref. 2195022		Part Volume (cm³)	-
Items Descriptions \ Notes: N°1 CC1P18G504007 H=35 X=90(45+45) Y=75(37.5+37.5) with M6 fixing Screws N°1 Heated Sprue Bushing LB=52 R=0 Ø33 (Minitubular Coiled Heater) N°4 UGCL2003-M-A L=74 C=56 ØC=4 Ød=1.2		Colour Change	Yes
File Location: E:\Ordini 3D\ANNO 2011\OC20110837 [Inst.3D]\		Average Wall Thickness (mm)	1.3 mm
		Filler	No
		REVISIONS	1
		Sheet (format)	A4
		DATE	14/11/11
		DRAWN BY	GEMACCE/M.M.
		Scale	-
		INSPECTION TEMPERATURE	260°
		DELIVERY	11/11/11
		SEES WITHOUT TOLERANCE INDICATION	
		UNI EN 22768-1	
		SHEETS	
		1/1	